



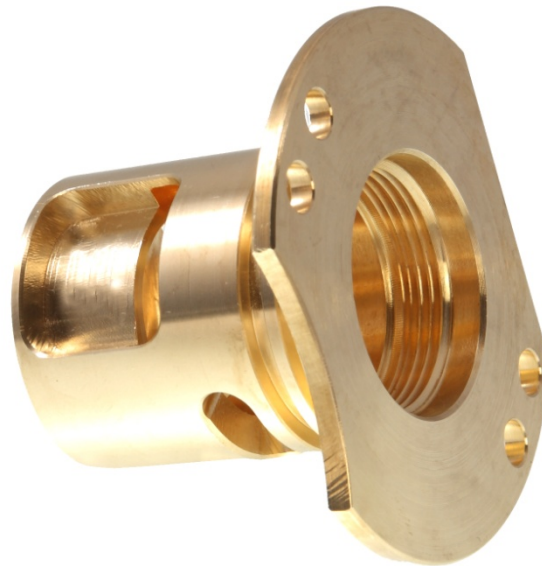
www.torneria-pizeta.it

PIZETA S.r.l.

Di Peron e Zerbato

TORNERIA AUTOMATICA A C.N.C.

Lavorazioni da barra con C.N.C. 5-11
assi fantina fissa e mobile
Diametri tornibili da 2 a 70mm
Lavorazione su centri di lavoro



Description: Valve Adaptor CW614N

- Sector: Gas
- Material: CW614N
- Dimensions: Diameter=66; Length=46
- Most significant tolerances: ± 0.01 on external diameter
- Most significant roughness: $Ra < 3.2$